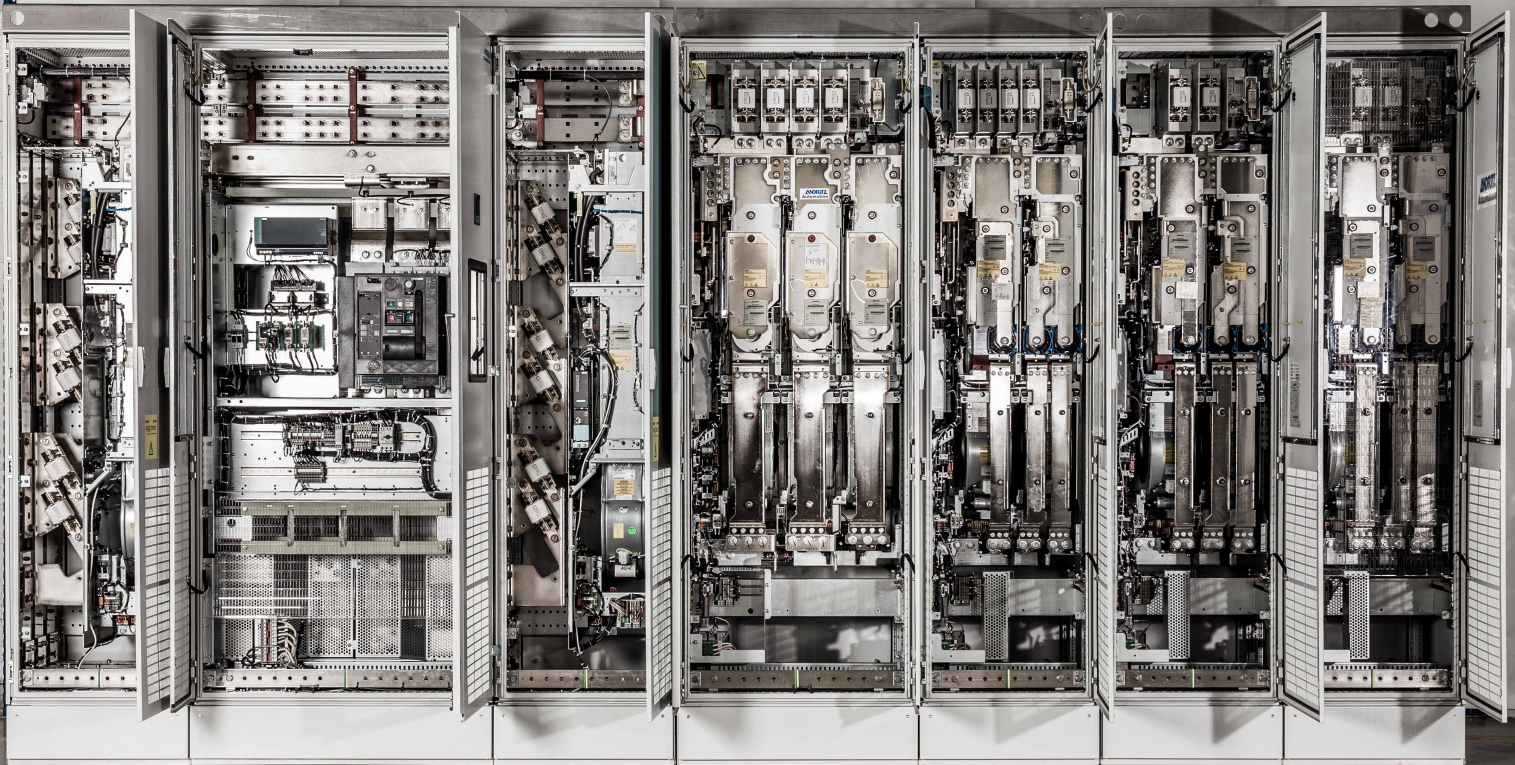


# Multi Motor Drive (MMD)

ANDRITZ process control solutions



# Multi Motor Drive (MMD)

## ANDRITZ process control solutions

ANDRITZ AUTOMATION drive technology combines mechanical design expertise integrated into electrical inverter-based systems and control strategies tailored for multi motor drive systems.

ANDRITZ Multi Motor Drive (MMD) is based on state-of-the-art inverter technology (vendor-independent) and complemented by integrated safety elements that adhere to current laws and standards. Extended diagnostic features and seamless integration with ANDRITZ Distributed Control Systems (DCS), offer customers considerable benefits.



### Characteristics

MMD	Included
Control cabinets with uninterruptible power supply (UPS) and central IO modules in combination with safety input for e-stop	✓
Safety functions according to IEC 61800-5-2 to SIL2	✓
Infeed cabinets with performance measurement and consumption analysis (400V/690V)	✓
Rectifier cabinets (backfeeding optional)	✓
Inverter cabinets with high-speed system bus and cable marshalling space	✓
ANDRITZ project workflow	✓
ANDRITZ process library with advanced fastloop integration for highest performance and precision	✓
Prearrangement for process simulator integration	✓
Prearrangement for continuous remote support service and lifecycle assistance with integrated web documentation	✓
Test and approval according to EN 62381	✓



### Benefits

- Innovative solutions due to independent hardware sourcing
- Fast and optimal scaling for all applications
- Flexible and favorable hardware selection according to individual requirements and budget
- Reduced energy and power consumption

#### ANDRITZ AG

Stattegger Strasse 18  
8045 Graz, Austria  
Phone: +43 (316) 6902 2398



[www.andritz.com](http://www.andritz.com)  
[automation@andritz.com](mailto:automation@andritz.com)